

Structural Anchoring Consolidation Tower Bridge, London

Client: Building Conservation
& Restoration Co.

Completed: 2017

Case Study No: 275

- World Famous Construction
- Structural Anchoring
- Coping Stone Consolidation

The Project:

Structural anchoring
to facilitate coping
stone consolidation
on the South West
corner of the world
famous Tower
Bridge, London.



PROTECTAHOME

STRUCTURAL SOLUTIONS

www.protectahome.co.uk

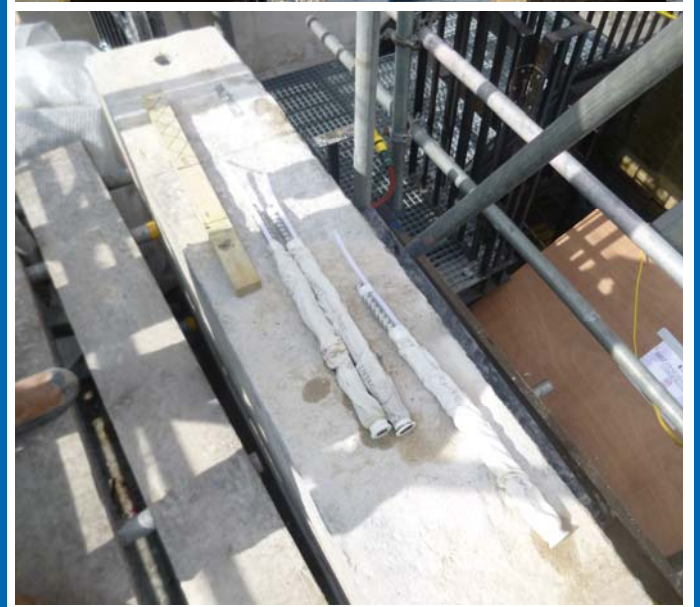
0845 601 1980

Tower Bridge - The Problem

Arguably the most recognisable bridge in the world and one of London's iconic landmarks, Tower Bridge is still lauded as an engineering marvel over 120 years after its construction in Victorian era Britain. Today, it is still a key component in the London travel network by both road and river.

In 2017, the bridge required works to enable the consolidation of the coping stones on the South West corner.

Due to previous experience working on other famous heritage sites such as Medieval castles and bridges, Protectahome were approached by the Structural Engineer appointed as Project Manager to act as the contractor on a structural anchoring solution.



PROTECTAHOME

STRUCTURAL SOLUTIONS

www.protectahome.co.uk

0845 601 1980

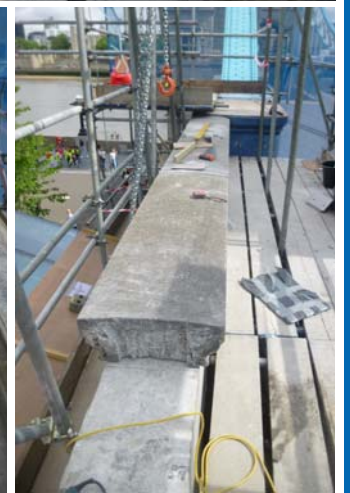
Tower Bridge - The Solution

Working in conjunction with the structural engineer to design a suitable specification, Protectahome's specialist structural repairs division were to expertly install 48 No. 450mm sock anchors vertically into the supporting structure beneath a section of the granite coping stones in the South West corner of the bridge.

The installation process involved specialist diamond drilling expertise whilst extra care and skill were demanded due to both the solid granite structure and the historical importance of the site.

Once in place, the sock anchors were inflated with specialist cementitious grout to secure them within the structure. The installed anchors would then aid in the consolidation of the coping stones when replaced around and fixed to them.

Due to the extremely busy and high profile nature of the site, both health & safety and time constraints were of particular importance on the project and Protectahome were able to complete the works on time, within budget and without incident, much to the satisfaction of the end client.



PROTECTAHOME

STRUCTURAL SOLUTIONS

www.protectahome.co.uk

0845 601 1980