

Case Study 165:

## CINTEC ANCHORS: GORLECH BRIDGE, CARMARTHEN

### THE PROBLEM

Gorlech Bridge has stood over the river Gorlech for over 110 years. The arch bridge is of traditional stone construction and set in a beautiful woodland location popular with cyclist and tourists.

Concerns were raised about significant cracks that had developed through the bridge. The spandrels were separating from the soffit of the bridge and deep cracks had formed approximately 500mm in from the external face.

Due to the popularity of the area and the possible consequences of a bridge closure to local residents and business, it was essential that the bridge remained open and serviceable.

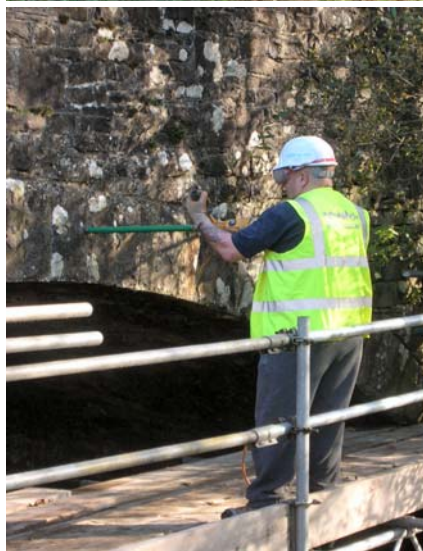
### THE SOLUTION

Protectahome were asked to carry out a detailed inspection of the bridge and review engineer's reports. We provided a quotation for a scheme of remedial repairs based on the Cintec Anchor System.

As a full package of works, we were responsible for the provision of all welfare, traffic management, scaffolding, anchoring and repointing. Our risk assessments and method statement were prepared mindful of the location and the risks associated with working directly over flowing water.

Our scaffold design allowed for a fully suspended work deck above the river. From this platform our technician's core drilled holes through the spandrels and installed Cintec RWT anchors 1200mm long. Upon completion, the cores were rebedded for an almost invisible repair. The main crack was improved using a lime based mortar.

Work was completed on time, within budget and with the minimum of disruption to the surrounding community and businesses. The bridge remained open throughout.



**UK ENQUIRY LINE**

**0845 601 1980**

[www.protectahome.co.uk](http://www.protectahome.co.uk)



FS 605