

# PROTECTAHOME LTD STRUCTURAL SOLUTIONS

Targeting problems with the best solutions

Established 1980

Case Study 173:

## HELIFIX REPAIR: DELANCEY STREET, LONDON, W1

### THE PROBLEM

A traditional, brick built two storey property utilised for commercial purposes was undergoing a significant refurbishment. The building has, over many years, been altered to provide open plan accommodation. This work included for the construction of an inner skin block wall partially supporting the steel roof and deck above.

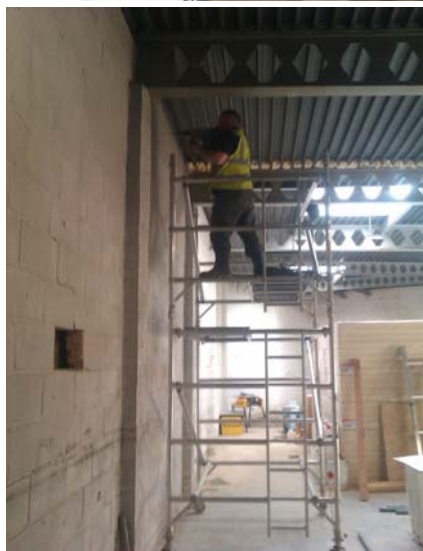
During the course of the refurbishment work, site investigations identified that the inner skin block wall was not adequately tied back to the external solid brick construction. It was found that there were insufficient numbers of Wall Ties installed both horizontally and vertically.

### THE SOLUTION

Protectahome carried out a detailed inspection of the building and proposed a Helifix Masonry Repair system to deal with the problem. This included for the introduction of additional Stainless Steel Helical Wall Ties from the Helifix DryFix range. Helifix DryFix ties 220mm long by 8mm in diameter were matched to the thickness of masonry leaves, the desired embedment and the width of the cavity.

After drilling a pilot hole through the inner block work skin, the Helifix DryFix ties were driven in. A selection of ties were tested using a Hydraulic Pull Tester to ensure that the Helifix DryFix ties were able to provide the required loading. Protectahome's selection of this type of Masonry Repair System and installation from inside, meant there was little making good and no drying time required. This enabled the main contractor to carry on with the application of finishes immediately after our work was complete.

The installation carries a Protectahome long term Guarantee and was completed with the minimum of disruption and interference with the principle contractor's programme of refurbishment work.



**UK ENQUIRY LINE**  
**0845 601 1980**

[www.protectahome.co.uk](http://www.protectahome.co.uk)

