



PROTECTAHOME LTD WATERPROOFING SOLUTIONS

Targeting problems with the best solutions

Established 1980

Case Study 175:

BASEMENT WATERPROOFING - ICF CONSTRUCTION, SANDBANKS

THE PROBLEM

Constructed using Insulating Concrete Formwork (ICF), these two new Architect Designed Luxury Family Homes include for Habitable Basement Accommodation. The houses are situated in one of Poole's most prestigious locations on a road, named in research by Lloyds TSB, as "the most expensive street outside of London".

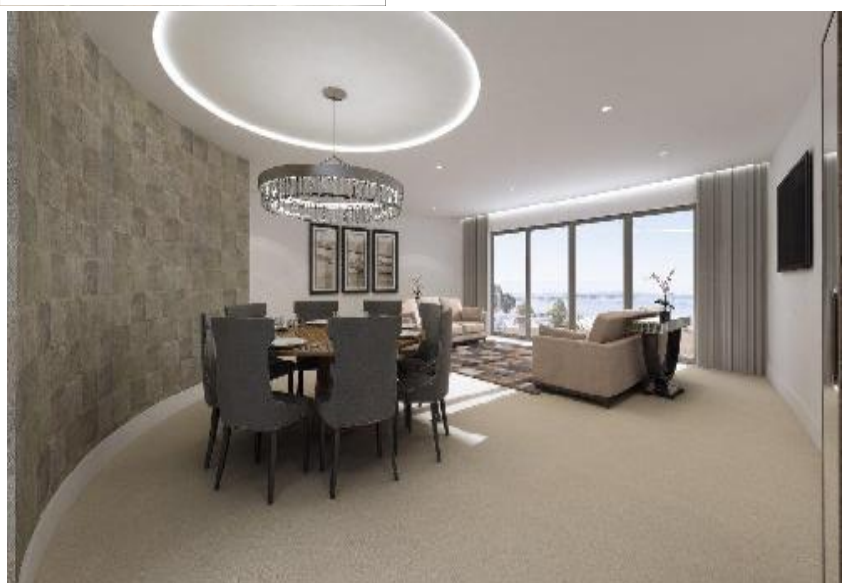
The principle form of Waterproofing installed during the construction phase had proved unsuccessful and the basement suffered from significant ground water ingress. A remedial Basement Waterproofing Solution was required that would be capable of delivering the Environmental Grade suitable for domestic accommodation.

THE SOLUTION

Protectahome were appointed to provide a comprehensive Waterproofing Solution due to our extensive experience of working with ICF Construction. We designed and installed a Basement Waterproofing solution that satisfied all of the site demands. These included the type of construction, suitability of the Waterproofing System, Ground Water Ingress Risk Assessment, the Form and Feasibility of Repair and the End Use.

Working closely with the main contractor and to a tight programme, our site team ensured that a Type C Drained Protection Basement Waterproofing System was installed to the ICF Construction using the most appropriate techniques and fixings.

An additional benefit of using the Protectahome designed Waterproofing System, was there was no drying time which meant the main contractor could proceed with finishing works without delay. The Waterproofing Installation benefits from a Protectahome long term Guarantee and design liability is covered by our own PI Insurance. More information about ICF and additional ICF Basement Waterproofing Case Studies can be found on our website.



UK ENQUIRY LINE
0845 601 1980

