



# PROTECTAHOME LTD WATERPROOFING SOLUTIONS

Targeting problems with the best solutions

Established 1980

## Case Study 98:

## BASEMENT WATERPROOFING - THE FLORENCE INSTITUTE, LIVERPOOL

### THE PROBLEM

Constructed in 1889 the "Florrie" as it is known by many locally, was a purpose built boys youth club. The building closed in 1988 and fell into disrepair, the roof was then badly damaged by a major fire in 1999. A local community pressure group campaigned for the restoration of the Florrie and with granting of Grade II\* Listed Building status, a £6.4 million restoration began in 2010.



Part of the ambitious restoration plans included for the utilisation of the damp basement for managed workspace units, offices, storage and WC's. Protectahome were commissioned to design and provide a guaranteed Waterproofing Solution.

### THE SOLUTION

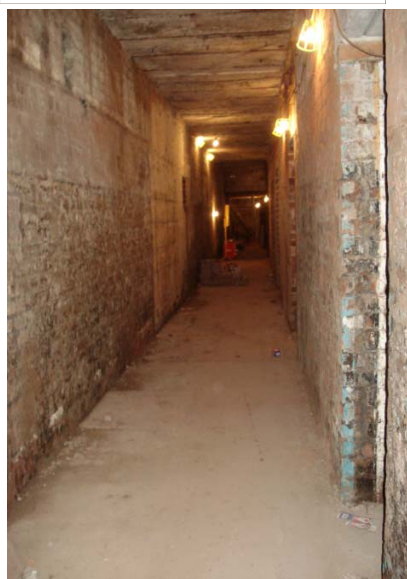
Protectahome designed and installed a Type C Drained Protection Waterproofing System incorporating BBA certificated products from Newton Membranes.

The walls were treated using a combination of Newton 500 and Newton 508 Meshed Cavity Drain Membranes. A fully serviceable Basedrain perimeter drainage channel was installed, discharging to a combination of passive and powered disposal points. Newton 601 flooring membrane was used to seal the floors prior to finishes being applied.

In total the Basement Waterproofing System includes for 1200 square metres of Waterproof Newton Membranes and 200 linear metres of Basedrain.

All the work was carried out by our own directly employed operatives under the supervision of our Area Manager. The installation benefits from the provision of a Protectahome long term Guarantee and the design is covered by our own Professional Indemnity Insurance.

The Florrie will be officially reopened in July 2012 by the Bishop of Liverpool James Jones and comedian Jimmy Tarbuck OBE.



**UK ENQUIRY LINE**  
**0845 601 1980**

